

Aqua-Shield™ AQW-MC

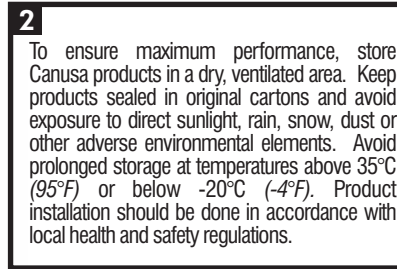
One-piece protective sleeve with pre-attached closure

Product Description



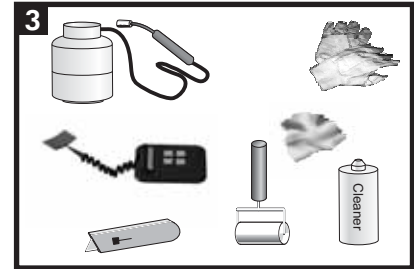
Aqua-Shield™ AQS is shipped pre-cut with a pre-attached closure. The adhesive is protected from contamination by an inner liner.

Storage & Safety Guidelines



To ensure maximum performance, store Canusa products in a dry, ventilated area. Keep products sealed in original cartons and avoid exposure to direct sunlight, rain, snow, dust or other adverse environmental elements. Avoid prolonged storage at temperatures above 35°C (95°F) or below -20°C (-4°F). Product installation should be done in accordance with local health and safety regulations.

Equipment List

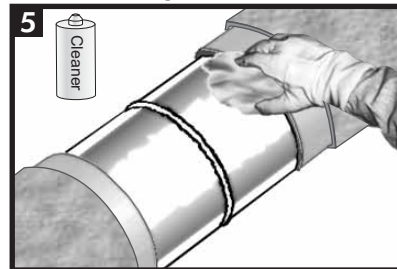


Propane tank, hose, torch & regulator
Appropriate tools for surface abrasion
Knife, roller, rags & approved cleaner
Digital thermometer with suitable probe
Standard safety equipment; gloves, goggles, hard hat, etc.

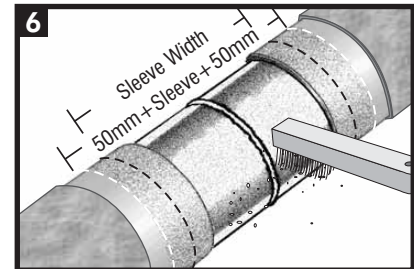
Flame Intensity & Torch Size

<p>Pipe O.D. ≤ 450mm (18")</p> <p>Use moderate flame intensity for pre-heating and shrinking.</p>	<p>Pipe O.D. > 450mm (18")</p> <p>Use moderate to high flame intensity for pre-heating and shrinking.</p>
<p>Minimum Torch Size: 150,000 BTU/hr.</p>	<p>Minimum Torch Size: 300,000 BTU/hr. >1500mm (60") use 2 torches.</p>

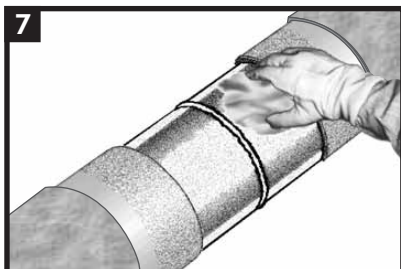
Surface Preparation



Ensure that the coating edges are beveled to 30°. Clean exposed steel and adjacent pipe coating with cleaner to remove the presence of oil, grease, and other contaminants.

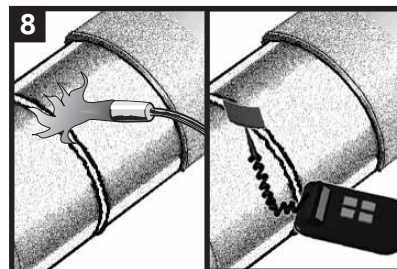


Ensure that the pipe is dry before cleaning. The steel joint area must be cleaned to a minimum of a wire brush finish. It is recommended to lightly abrade (with a hand tool) the pipe coating adjacent to the weld area to a distance of 50mm (2") beyond each end of the sleeve width.



Wipe clean or air blast the steel and pipe coating to remove foreign contaminants.

Pre-Heat

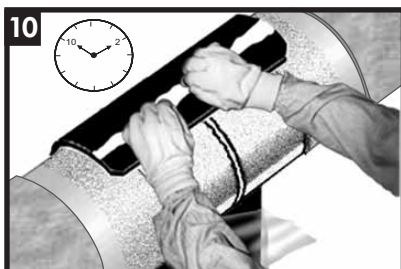


Pre-heat the steel joint area using propane torches such that no moisture is visible (typically temperatures of 40-60°C (100-140°F) are recommended on sleeve area). On pipe diameters greater than 1220mm (48"), use two torches on opposite sides. Apply the sleeve rapidly to minimize loss of pre-heat.

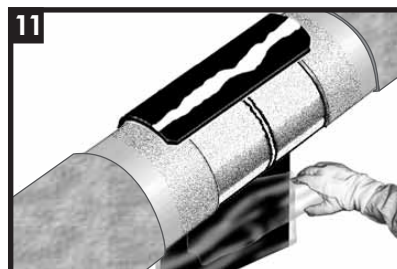
Sleeve Installation



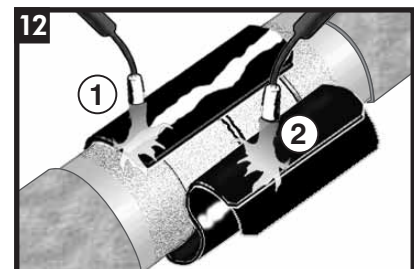
Partially remove the release liner and gently heat the underlap approximately 150 mm (6") from the edge.



Centre the sleeve over the joint so that the sleeve overlaps between the 10 and 2 o'clock positions. Press the underlap firmly into place.

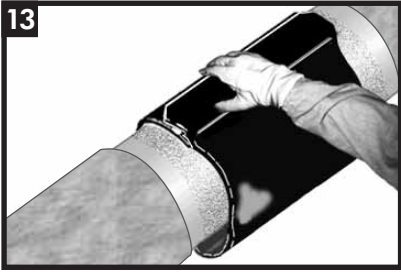


Remove the remaining release liner.

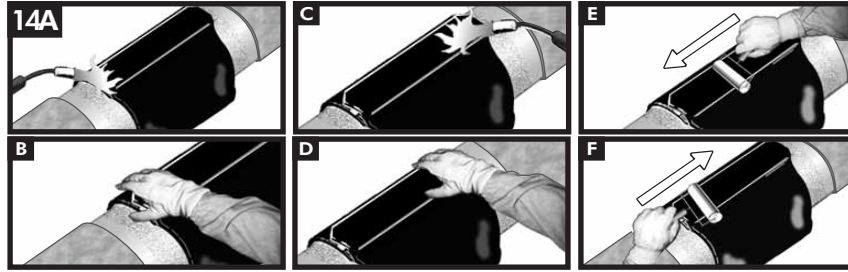


Wrap the sleeve loosely around the pipe, ensuring the appropriate overlap. Gently heat the backing of the underlap and the adhesive side of the overlap.

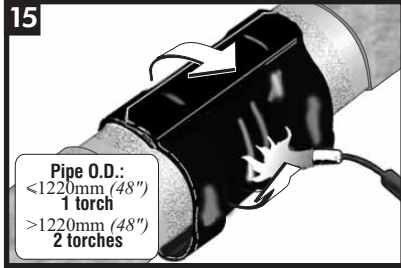
Aqua-Shield™ AYW-MC



Press the closure firmly into place.

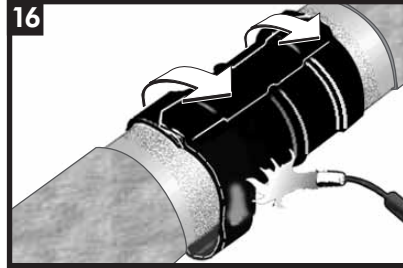


Gently heat the closure and pat it down with a gloved hand. Repeating this procedure, move from one side to the other. Smooth any wrinkles by gently working them outward from the centre of the closure with a roller.

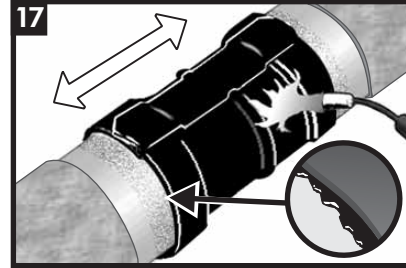


Pipe O.D.:
<1220mm (48")
1 torch
>1220mm (48")
2 torches

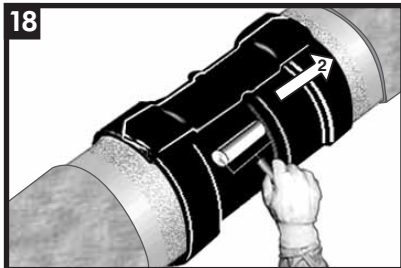
Using the appropriate torch, begin at the centre of the sleeve and heat circumferentially around the pipe. Use broad strokes. If utilizing two torches, operators should work on opposite sides of pipe.



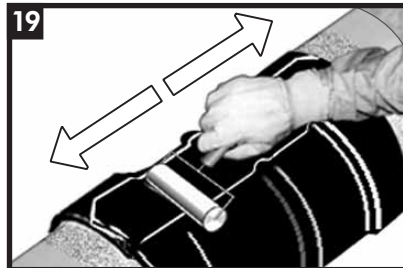
Continue heating from the centre toward one end of the sleeve until recovery is complete. In a similar manner, heat and shrink the remaining side.



Shrinking has been completed when the adhesive begins to ooze at the sleeve edges all around the circumference. Finish shrinking the sleeve with long horizontal strokes over the entire surface to ensure a uniform bond.

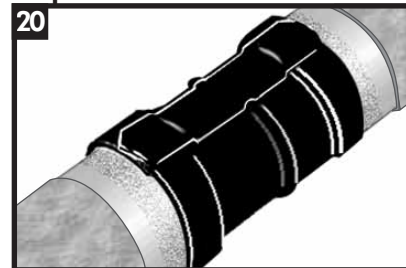


While the sleeve is still hot and soft, use a hand roller to gently roll the sleeve surface and push any trapped air up and out of the sleeve, as shown above. If necessary, reheat to roll out air.



Continue the procedure by also firmly rolling the closure with long horizontal strokes from the weld outwards.

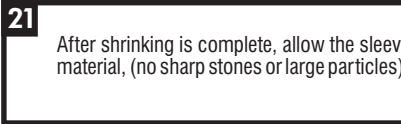
Inspection



Visually inspect the installed sleeve for the following:

- Sleeve is in full contact with the steel joint.
- Adhesive flows beyond both sleeve edges.
- No cracks or holes in sleeve backing.

Backfilling Guidelines



After shrinking is complete, allow the sleeve to cool for 2 hours prior to lowering and backfilling. To prevent damage to the sleeve, use selected backfill material, (no sharp stones or large particles). Otherwise, an extruded polyethylene mesh or other suitable shield should be used.



A SHAWCOR COMPANY

Canada
CANUSA-CPS
a division of SHAWCOR LTD.
25 Bethridge Road
Toronto, Ontario
M9W 1M7,
Canada
Tel: +1 (416) 743-7111
Fax: +1 (416) 743-5927

U.S.A./Latin America
CANUSA-CPS
a division of SHAWCOR INC.
2408 Timberloch Place
Building C-8
The Woodlands, Texas
77380, U.S.A.
Tel: +1 (281) 367-8866
Fax: +1 (281) 367-4304

Europe/Middle East
CANUSA-CPS
a division of Canusa Systems Ltd.
Unit 3, Sterling Park
Gatwick Road
Crawley, West Sussex
England RH10 9QT
Tel: +44 (1293) 541254
Fax: +44 (1293) 541777

Asia/Pacific
CANUSA-CPS
a division of SHAWCOR LTD.
#05-31, Blk 52, Frontier
Ubi Avenue 3
Singapore
408867
Tel: +65-6749-8918
Fax: +65-6749-8919

www.canusacps.com