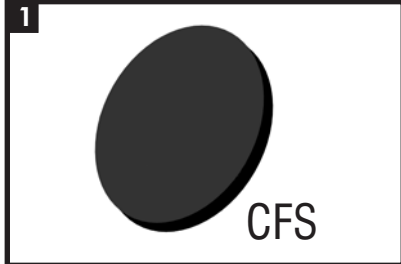


Canusa Foam Seal - CFS

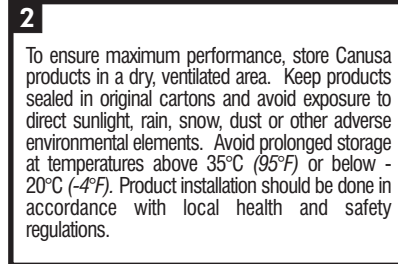
Seal patch for casing foaming holes

Product Description



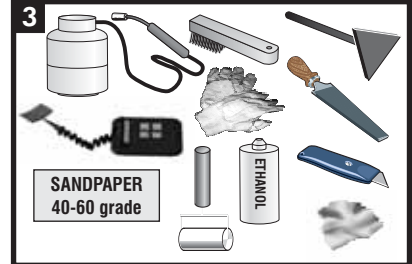
The Canusa Foam Seal (CFS) is a crosslinked casing foaming hole patch.

Storage & Safety Guidelines



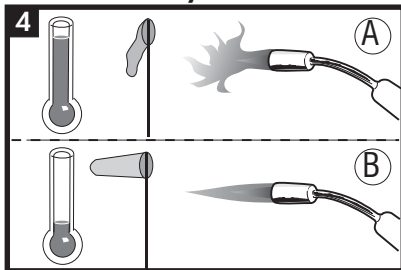
These installation instructions are intended as a guide for standard products. Consult your Canusa representative for specific projects or unique applications.

Equipment List



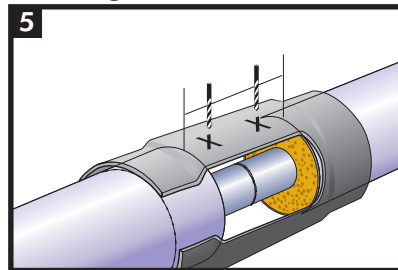
Propane tank, hose, torch & regulator
Sandpaper (40-60 grade) or wire brush
Knife, roller, rags & ethanol (min. 94%) cleanser
Temperature measuring device, grater, triangular scraper
Standard safety equipment; gloves, goggles, hard hat, etc.

Flame Intensity

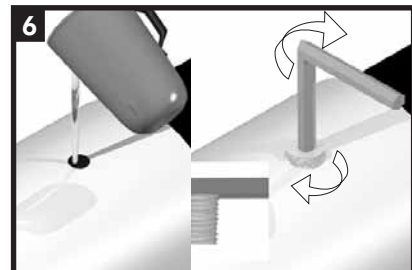


Adjust the flame according to outside conditions.
a. Use bluish-yellow flame for low wind, higher temps.
b. Use blue flame for high wind, lower temperatures.
Always aim the torch perpendicular to the pipe and move in a circumferential direction.

Foaming

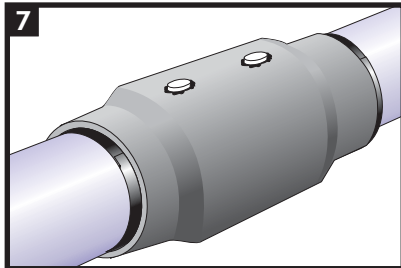


Drill one foaming hole over the pressure testing hole. Drill the other foaming hole, if required (as close as possible to the cutback).



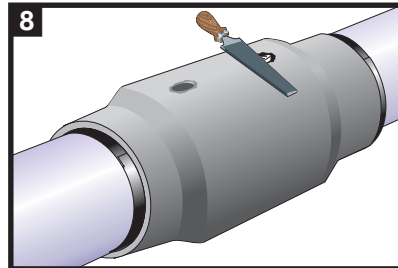
Foam the joint according to the manufacturer's guideline using standard vent plugs to seal the foaming holes.

Plugs



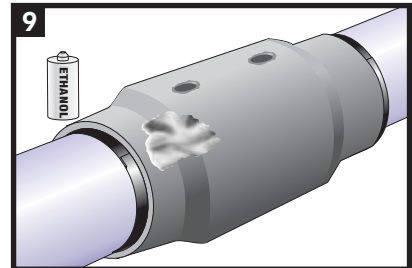
After the foam has hardened, remove the vent plugs and weld the standard weldable plugs.

Foam Hole Preparation

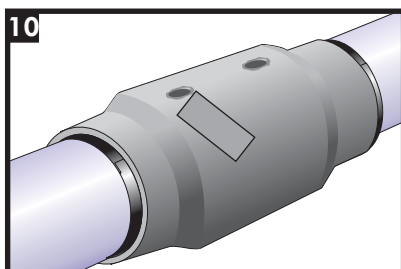


Using a grater, sand down the plugs bringing them flush to the surface of the casing.

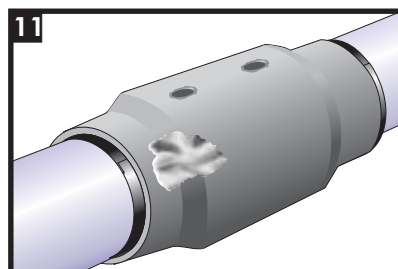
Casing Surface Preparation



De-grease the surface of the casing using a grease and lint-free rag soaked in ethanol.

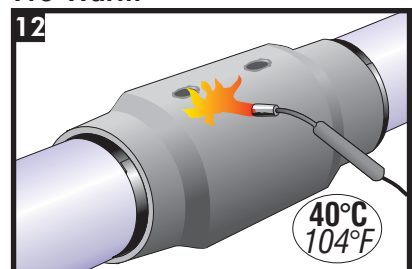


Roughen the surface around the plug using 40-60 grade sandpaper or wire brush.



Use a grease and lint-free rag to remove any polyethylene or sand particles caused by roughening the surface.

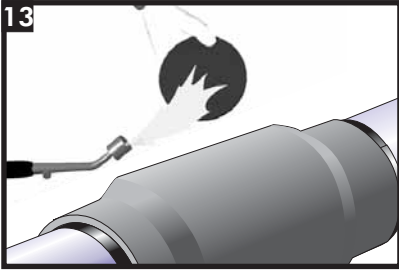
Pre-Warm



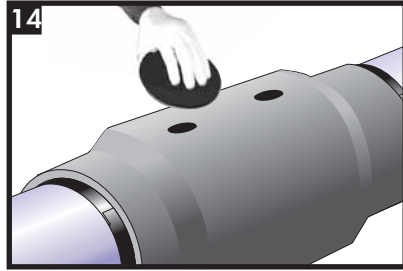
Pre-warm the casing surface around the foaming hole to 40°C. Check the temperature using a temperature measuring device.

Canusa Foam Seal - CFS

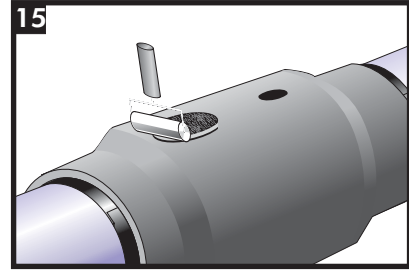
CFS Installation



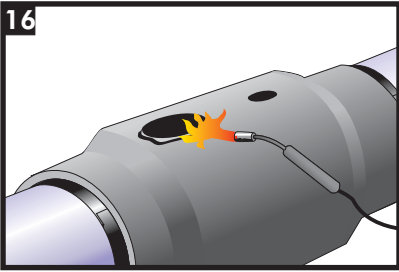
Heat the adhesive side of the CFS with a medium intensity flame until the adhesive turns glossy thus indicating that the adhesive has been activated.



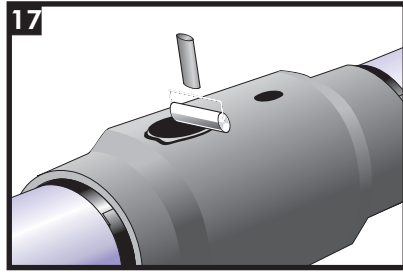
Place the CFS onto the pre-cleaned and pre-warmed section of casing directly over the centre of the foaming hole.



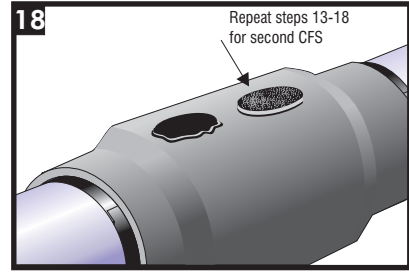
Using a gloved hand or roller, pat down the CFS for about 5 seconds, or until the entire CFS surface makes good contact with the casing.



Using a medium flame, heat the backside of the CFS until the adhesive oozes from the edge of the patch.

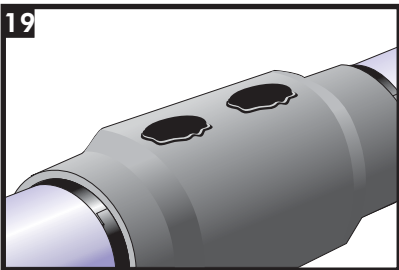


Using a roller and a gentle flame, smooth out the CFS surface.



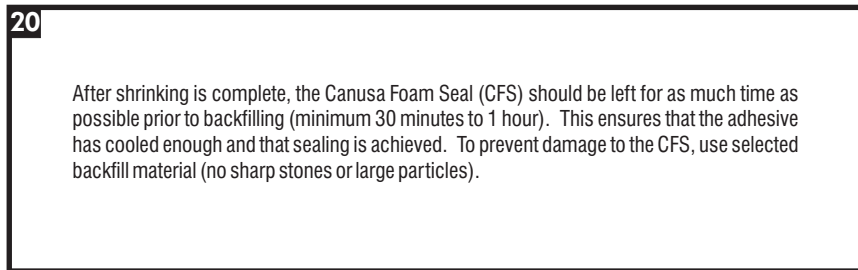
The CFS has been fully installed when adhesive can be seen around the entire circumference. Repeat steps 13-18 to patch the other foaming hole.

Installation Complete



The CFS has been fully installed when adhesive can be seen around the entire circumference. Visually inspect that the patch for any breaks or holes.

Backfilling Procedures



After shrinking is complete, the Canusa Foam Seal (CFS) should be left for as much time as possible prior to backfilling (minimum 30 minutes to 1 hour). This ensures that the adhesive has cooled enough and that sealing is achieved. To prevent damage to the CFS, use selected backfill material (no sharp stones or large particles).



A SHAWCOR COMPANY

Canada

CANUSA-CPS
a division of SHAWCOR LTD.
25 Bethridge Road
Rexdale, Ontario
M9W 1M7,
Canada
Tel: +1 (416) 743-7111
Fax: +1 (416) 743-5927

U.S.A./Latin America

CANUSA-CPS
a division of SHAWCOR INC.
2408 Timberloch Place
Building C-8
The Woodlands, Texas
77380, U.S.A.
Tel: +1 (281) 367-8866
Fax: +1 (281) 367-4304

Europe/Middle East

CANUSA-SYSTEMS
a division of SHAWCOR UK LIMITED
Unit 3, Sterling Park
Gatwick Road
Crawley, West Sussex
England RH10 9QT
Tel: +44 (1293) 541254
Fax: +44 (1293) 541777

Asia/Pacific

CANUSA-CPS
a division of SHAWCOR LTD.
#05-31, Blk 52, Frontier
Ubi Avenue 3
Singapore
408867
Tel: +65-6749-8918
Fax: +65-6749-8919

Canusa warrants that the product conforms to its chemical and physical description and is appropriate for the use stated on the installation guide when used in compliance with Canusa's written instructions. Since many installation factors are beyond our control, the user shall determine the suitability of the products for the intended use and assume all risks and liabilities in connection therewith. Canusa's liability is stated in the standard terms and conditions of sale. Canusa makes no other warranty either expressed or implied. All information contained in this installation guide is to be used as a guide and is subject to change without notice. This installation guide supersedes all previous installation guides on this product. E&OE