

Superseal™

Protective sleeves for pre-insulated pipe joints

For more than 35 years, Canusa-CPS has been a leading developer and manufacturer of specialty pipeline coatings for the sealing and corrosion protection of pipeline joints and other substrates. Canusa-CPS high performance products are manufactured to the highest quality standards and are available in a number of configurations to accommodate many specific project applications.

Product Description

The Canusa Superseal™ Sleeve is a high performance heat shrinkable product for the sealing of pre-insulated pipe joints. It is specifically designed for pipes and casings made from high density polyethylene, for district heating applications where soil stress and pipe movements are common.

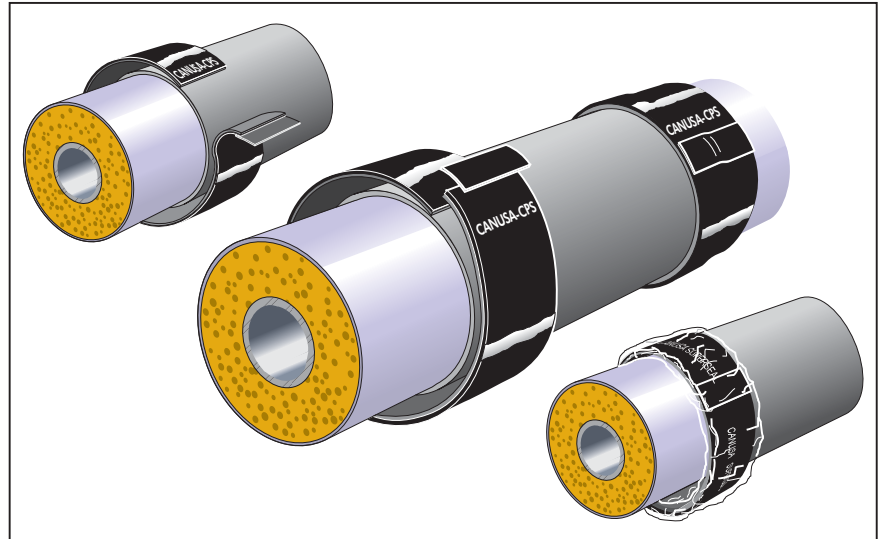
Features & Benefits

Long Term Sealing Protection

Once installed, the Superseal™ products have excellent structural integrity, and provide the substrate with durable protection against abrasion and chemical attack. The high performance crosslinked backing provides the superior abrasion resistance and mechanical strength required for high stress environments. In combination with a high shear resistant adhesive, Superseal™ provides excellent resistance to soil stress, temperature cycling effects and pipe movements, resulting in an effective long term seal.

Flexible & Reliable Installation

The Superseal™ products are available in three different configurations for flexibility of installation.

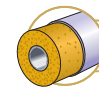

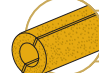


- I) The patented one-piece configuration (K) incorporates a pre-attached closure strip that has been factory applied resulting in quick and reliable field installation.
- II) The bulk wrap (W) configuration is supplied in a bulk roll, with separate closure seals, providing just-in-time customized lengths. This flexibility results in reduced inventories and cost savings on the job site.
- III) The tubular (P) sleeve consists of a unique configuration that has been factory constructed, resulting in quick and reliable field installation. The sleeve is supplied in a sealed bag to prevent contamination.

Assured Performance

Super Heavy Duty configuration of the Superseal product (S) meets and exceeds the stringent requirements of the European Standard EN 489:2009 for District Heating products, having been fully tested and approved by independent District Heating authorities. The product has surpassed the rigorous soil stress test followed by the water impermeability test.

Applications

-  Pre-Insulated Pipes
-  Foam-In-Place
-  Pre-Foamed Joints

Configurations

-  Wrapid Sleeve™
-  CanusaWrap™
-  CanusaTube™
-  Standard Shrink
-  Black Backing

Pipe Sizes

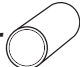

-  63-1200mm

Approvals

-  EN 489:2009

Product Selection Guide

Use **Tubes** for **quickest** installation. Use **One-Piece** for **optimum** installation. Use **Bulk Wrap** for optimum **flexibility**.

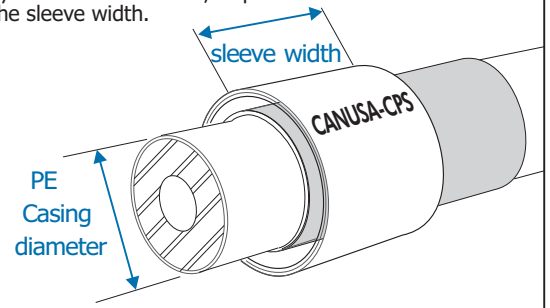
Product Selection by Casing Size	Polyethylene Casing Size	Tubular 	One-Piece Pre-Attached Closure 			Bulk Wrap with separate closure 			Cut Length = circumference of oversize casing + overlap
	(mm)	PTD	KTD	KLD	WTD	WLD	WSD		
90	PTD 90-150 BK	KTD 90-150 BK	KLD 90-150 BK	WTD-B 150-30 BK	WLD-B 150-30 BK	WSD-B 150-30 BK			
110	PTD 110-150 BK	KTD 110-150 BK	KLD 110-150 BK						
125	PTD 125-150 BK	KTD 125-150 BK	KLD 125-150 BK						
140	PTD 140-150 BK	KTD 140-150 BK	KLD 140-150 BK						
160	PTD 160-150 BK	KTD 160-150 BK	KLD 160-150 BK						
180	PTD 180-150 BK	KTD 180-150 BK	KLD 180-150 BK						
200	PTD 200-150 BK	KTD 200-150 BK	KLD 200-150 BK						
225	PTD 225-150 BK	KTD 225-150 BK	KLD 225-150 BK						
250	PTD 250-150 BK	KTD 250-150 BK	KLD 250-150 BK						
280	PTD 280-150 BK	KTD 280-150 BK	KLD 280-150 BK						
315	PTD 315-225 BK	KTD 315-225 BK	KLD 315-225 BK	WTD-B 225-30 BK	WLD-B 225-30 BK	WSD-B 225-30 BK			
355	PTD 355-225 BK	KTD 355-225 BK	KLD 355-225 BK						
400	-	--	KLD 400-225 BK	--					
450	-	--	KLD 450-225 BK	--					
500	-	--	KLD 500-225 BK	--					
560	-	--	KLD 560-225 BK	--					
>630	-	--	KLD XXX-300 BK	--	WLD-B 300-30 BK	WSD-B 300-30 BK			
Wider Joints			Use KTD / KLD widths 450, 650, 760, 900 mm			Use WTD / WSD widths 450, 650, 760, 900 mm			

The product selection chart shown here is intended as a guide for standard products. Consult your Canusa representative for specific projects or unique applications.

Typical Product Properties

Adhesive	Test Standard	Unit	Typical Value
Softening Point	ASTM E28	°C (°F)	85 (185)
Lap Shear Strength	DIN 30 672	N/cm ² (psi)	135 (196)
Backing			
Specific Gravity	ASTM D792		0.93
Tensile Strength	ASTM D638	MPa (psi)	24 (3480)
Elongation	ASTM D638	%	700
Hardness	ASTM D2240	Shore D	48
Abrasion Resistance	ASTM D1044	mg	35
Sleeve			
Peel Strength	DIN 30 672	N/cm (pli)	85 (49)
Soil Box Test*	EN 489:2009	100 cycles	pass
Water Absorption	ASTM D570	%	0.05
Low Temperature Flexibility	ASTM D2671	°C (°F)	-30 (-22)
Water Pressure Test*	EN 489:2009	30 kPa, 23°C, 24h	pass

For Bulk Wrap, separate closures are required. They are available in rolls, or pre-cut to the sleeve width.



How To Order:

Dimensions & Ordering Info	KLD 315-225 BK	Tubular		Pre-Attached Closure				
		Regular (T)	Heavy Duty (L)	Regular (T)				
Colour	BK - Black	BK - Black	BK - Black	BK - Black	BK - Black			
Sleeve Width	150 mm, 225 mm	150 mm, 225 mm	150 mm, 225 mm, 450 mm, 650 mm, 760 mm, 900 mm	150 mm, 225 mm, 450 mm, 650 mm, 760 mm, 900 mm	150 mm, 225 mm, 450 mm, 650 mm, 760 mm, 900 mm			
PE casing diameter	See selection guide	See selection guide	See selection guide	See selection guide	See selection guide			
Adhesive (thickness as supplied)	0.75 mm (30 mils)	0.75 mm (30 mils)	1.3 mm (50 mils)	0.9 mm (35 mils)	0.9 mm (35 mils)			
Backing (thickness as supplied)	T - 0.55 mm (21 mils)	T - 0.55 mm (21 mils)	0.9 mm (35 mils)	0.9 mm (35 mils)	0.64 mm (25 mils)			
Configuration	P- CanusaTube™	P- CanusaTube™	K- Wrapid Sleeve™	K- Wrapid Sleeve™	K- Wrapid Sleeve™			
Dimensions & Ordering Info	WLD-B 225-30 BK	Two-Piece Sleeve			Separate Closure			
		Super Heavy Duty (S)	Heavy Duty (L)	Regular (T)	CLW-B 100-XX BK	CLW 100-YYY-BK	CLH-B 100-XX BK	CLH 100-YYY BK
Colour	BK - Black	BK - Black	BK - Black	BK - Black	BK - Black	BK - Black	BK - Black	BK - Black
Roll Length	up to 600 mm = 30 m, above 600 mm = 15 m	up to 600 mm = 30 m, above 600 mm = 15 m	up to 600 mm = 30 m, above 600 mm = 15 m	up to 600 mm = 30 m, above 600 mm = 15 m	XX: 15, 30 M (50, 100 ft.)	YYY: All Superseal widths	XX: 15, 30 M (50, 100 ft.)	YYY: All Superseal widths
Roll Width	150, 225, 450, 650, 760, 900 mm	150, 225, 450, 650, 760, 900 mm	150, 225, 450, 650, 760, 900 mm	150, 225, 450, 650, 760, 900 mm	100 mm (4")	100 mm (4")	100 mm (4")	100 mm (4")
Bulk Roll Designation	B- Bulk Roll	B- Bulk Roll	B- Bulk Roll	B- Bulk Roll	B- Bulk Roll	Cut-to-Length	B- Bulk Roll	Cut-to-Length
Adhesive (thickness as supplied)	0.9 mm (35 mils)	0.9 mm (35 mils)	0.9 mm (35 mils)	0.9 mm (35 mils)	W - n/a	W - n/a	H - 0.35 mm (14 mils)	H - 0.35 mm (14 mils)
Backing (thickness as supplied)	1.5 mm (60 mils)	0.9 mm (35 mils)	0.64 mm (25 mils)	0.65 mm (27 mils)	0.65 mm (27 mils)	0.65 mm (27 mils)	0.6 mm (32 mils)	0.6 mm (32 mils)
Configuration	W- CanusaWrap™	W- CanusaWrap™	W- CanusaWrap™	W- CanusaWrap™	C- Closure Seal (CLH Closures to be used with WSD only)	C- Closure Seal (CLH Closures to be used with WSD only)	C- Closure Seal (CLH Closures to be used with WSD only)	C- Closure Seal (CLH Closures to be used with WSD only)

Bulk rolls require separate closures.



A SHAWCOR COMPANY

Canada

CANUSA-CPS
a division of SHAWCOR LTD.
25 Bethridge Road
Toronto, Ontario
M9W 1M7,
Canada
Tel: +1 (416) 743-7111
Fax: +1 (416) 743-5927

U.S.A./Latin America

CANUSA-CPS
a division of SHAWCOR INC.
2408 Timberloch Place
Building C-8
The Woodlands, Texas
77380, U.S.A.
Tel: +1 (281) 367-8866
Fax: +1 (281) 367-4304

Europe/Middle East

CANUSA SYSTEMS
a division of SHAWCOR UK LIMITED
Unit 3, Sterling Park
Gatwick Road
Crawley, West Sussex
England RH10 9QT
Tel: +44 (1293) 541254
Fax: +44 (1293) 541777

Asia/Pacific

CANUSA-CPS
a division of SHAWCOR INC.
#05-31, Blk 52, Frontier
Ubi Avenue 3
Singapore
408867
Tel: +65-6749-8918
Fax: +65-6749-8919

Canusa warrants that the product conforms to its chemical and physical description and is appropriate for the use stated on the installation guide when used in compliance with Canusa's written instructions. Since many installation factors are beyond our control, the user shall determine the suitability of the products for the intended use and assume all risks and liabilities in connection therewith. Canusa's liability is stated in the standard terms and conditions of sale. Canusa makes no other warranty either expressed or implied. All information contained in this installation guide is to be used as a guide and is subject to change without notice. This installation guide supersedes all previous installation guides on this product. E&OE