

## Canusa TubularStops - PLX

### High shrink end cap for pre-insulated pipes

Canusa-CPS is a leading manufacturer of specialty pipeline coatings which, for over 30 years, have been used for sealing and corrosion protection of pipeline joints and other substrates. Canusa high performance products are manufactured to the highest quality standards and are available in a number of configurations to accommodate your specific project applications.

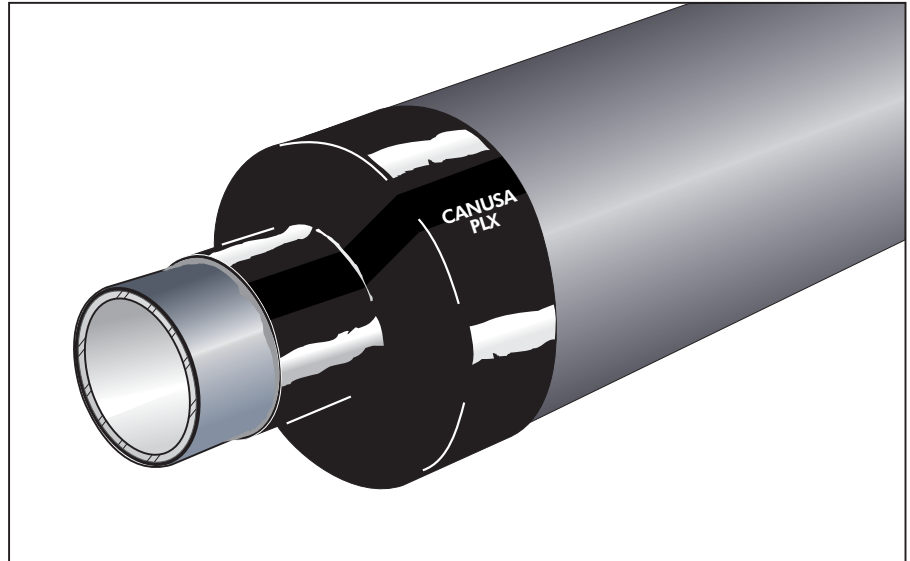
#### Product Description

The Canusa Tubularstop - PLX-65 is a heat-shrinkable, end cap for pre-insulated pipes (example: district heating pipes). The PLX-65 is made from a specially formulated crosslinked polymer and when combined with a high temperature sealant (ECS), it provides a high quality, reliable system for the sealing protection of pre-insulated pipes.

#### Features & Benefits

##### Watertight Seal

The Canusa Tubularstop - PLX-65 is designed to provide a watertight seal and prevent water access to the exposed insulation at the weld joint area. Upon application of heat, the PLX-65 shrinks to conform to the profile of the insulated pipe, while the sealant simultaneously "melts" to bond to the jacket pipe and the service pipe. To ensure overall protection of the insulating foam, PLX-65 should be used on both pipe ends.



##### Insulation Protection

The Canusa Tubularstop - PLX-65 can be factory-installed on the pre-insulated pipe. Once installed, the PLX-65 protects the insulation during transportation and storage. During service, the PLX-65 prevents water ingress into the insulation in the event of leakage at the joint. This can greatly reduce repair costs.

##### Large Size Range

The Canusa Tubularstop - PLX-65 is available in a full range of sizes to fit most service/jacket pipe combinations. Since the PLX-65 is heat shrinkable, one size can be used to cover several jacket pipe/service pipe combinations.

##### Easy Installation

The Canusa Tubularstop - PLX-65 is quick and easy to install. Upon application of heat the product quickly conforms to cover the pipe ends. The PLX-65 comes with a separate roll of adhesive which reduces the installation time.

#### Applications



Pre-Insulated Pipes



Oil & Gas



Water Pipelines



End Seal



High Temp

#### Configurations



CanusaTube™



High Shrink



Butyl Sealant

#### Pipe Sizes



PE 110 - PE 1200

#### Temperature Range



up to 120°C (248°F)

# Canusa TubularStop - PLX

## Product Selection Guide & Sizing: PLX-65

Common Pipe Dimensions PE/Service (mm)	Product Size	Supplied/Recovered mm (in)	Max. Jacket Pipe OD mm (in)	Min. Service Pipe OD mm (in)	Max. Sealant Length Req'd mm (in)	Min. Pieces / Adhesive Roll
110/48	PLX-65 125/50-250 BK	125/50 (4.9/2.0)	110 (4.3)	48 (1.9)	580 (22.8)	26
125/60	PLX-65 140/55-250 BK	140/55 (5.5/2.1)	125 (4.9)	55 (2.1)	660 (26.0)	22
140/60, 140/76	PLX-65 160/60-250 BK	160/60 (6.3/2.3)	140 (5.5)	60 (2.3)	750 (29.5)	20
160/76, 160/89	PLX-65 175/65-250 BK	175/65 (6.9/2.6)	160 (6.3)	65 (2.6)	860 (33.9)	17
180/76, 180/89	PLX-65 200/70-250 BK	200/70 (7.8/2.7)	180 (7.0)	70 (2.7)	920 (36.2)	16
200/89, 200/114	PLX-65 220/85-250 BK	220/85 (8.6/3.3)	200 (7.8)	85 (3.3)	1060 (41.7)	14
225/114, 225/140	PLX-65 260/100-250 BK	260/100 (10.2/3.9)	225 (8.8)	100 (3.9)	1220 (48.0)	12
250/114, 250/140, 250/168	PLX-65 280/110-250 BK	280/110 (11.0/4.3)	250 (9.8)	110 (4.3)	1390 (54.7)	10
280/140, 280/168, 280/194	PLX-65 310/125-250 BK	310/125 (12.2/4.9)	280 (11.0)	125 (4.9)	1560 (61.4)	9.6
315/168, 315/219	PLX-65 350/140-300 BK	350/140 (13.8/5.5)	315 (12.4)	140 (5.5)	1750 (68.9)	8.6
355/219	PLX-65 400/150-300 BK	400/150 (15.7/5.9)	355 (14.0)	150 (5.9)	1880 (74.0)	8.0
400/219, 400/273	PLX-65 450/160-300 BK	450/160 (17.7/6.3)	400 (15.7)	160 (6.3)	2190 (86.2)	6.8
450/273, 450/324	PLX-65 500/190-300 BK	500/190 (19.7/7.5)	450 (17.7)	190 (7.5)	2510 (98.8)	6.0
500/273, 500/324, 500/356	PLX-65 550/210-450 BK	550/210 (21.6/8.3)	500 (19.7)	210 (8.3)	2770 (109)	5.4
520/356, 520/406	PLX-65 560/220-450 BK	560/220 (22.0/8.6)	520 (20.5)	220 (8.6)	2990 (118)	5.0
560/324, 560/356, 560/406, 560/457	PLX-65 610/230-450 BK	610/230 (24.0/9.0)	560 (22.0)	230 (9.0)	3270 (129)	4.6
630/356, 630/406, 630/457, 630/508	PLX-65 680/245-450 BK	680/245 (26.7/9.6)	630 (24.8)	245 (9.6)	3650 (144)	4.1
670/406, 670/457, 670/508	PLX-65 710/250-450 BK	710/250 (28.0/9.8)	670 (26.3)	250 (9.8)	3780 (149)	4.0
710/406, 710/457, 710/508, 710/558	PLX-65 750/265-450 BK	750/265 (29.5/10.4)	710 (28.0)	265 (10.4)	4070 (160)	3.7
780/559, 780/610	PLX-65 825/290-450 BK	825/290 (32.4/11.4)	780 (30.7)	290 (11.4)	4450 (175)	3.4
800/457, 800/508, 800/559, 800/610	PLX-65 850/300-450 BK	850/300 (33.5/11.8)	800 (31.5)	300 (11.8)	4660 (183)	3.2
900/508, 900/559, 900/610, 900/711	PLX-65 950/335-450 BK	950/335 (37.4/13.1)	900 (35.4)	335 (13.1)	5140 (202)	2.9
1000/610, 1000/711, 1000/813	PLX-65 1050/375-450 BK	1050/375 (41.3/14.7)	1000 (39.3)	375 (14.7)	5770 (227)	2.6
1100/813, 1100/914	PLX-65 1150/405-450 BK	1150/405 (45.2/15.9)	1100 (43.3)	405 (15.9)	6410 (253)	2.3
1200/914, 1200/1016	PLX-65 1250/440-450 BK	1250/440 (49.2/17.3)	1200 (47.2)	440 (17.3)	7040 (277)	2.1

Double wraps of ECS can also be used to increase the sealant width (it will double the max sealant length required and half the pieces/adhesive bulk roll)

## Typical Product Properties: PLX-65 and ECS

Test Standard	Unit	Typical Result	Test Standard	Unit	Typical Result		
Backing Tensile Strength	ASTM D638	MPa (psi)	24 (3480)	Temperature Range	ASTM D1002-53T	°C (°F)	-23 to 120 (10 to 250)
Backing Elongation	ASTM D638	%	700	Lap Shear Strength	ASTM D395.55	N/cm <sup>2</sup> (psi)	12 (17)
Backing Hardness	ASTM D2240	Shore D	48	Compression Force		kg, (lbs)	6.8 (15)
Dielectric Voltage Breakdown	ASTM D149	kV/mm	27	(1" x 1½" x 4")			
Water Absorption	ASTM D570	%	0.05	Elongation	ASTM D638	%	400
				Hardness	penetrometer	--	58
				(100g, 5s)			
				Low Temperature Flexibility	ASTM D2671	°C (°F)	-15 (5)
				Moisture Vapour Resistance	ASTM E96	perms/10 mils	0.747

## How to Order: PLX-65 and ECS

PLX-65 260/100-250 BK	Ordering Options	ECS-B 30-1.25-15 BK	Ordering Options
Colour	<b>PLX-65</b>	Colour	<b>ECS</b>
Sleeve Width	<b>BK - Black</b>	Roll Length	<b>BK - Black</b>
Supplied/Recovered	<b>250, 300, 450mm (10, 12, 18")</b>	Adhesive Thickness (as supplied)	<b>15m (50ft)</b>
Recovery	260mm/100mm	Roll Width (as supplied)	<b>1.25mm (0.050")</b>
Shrink Ratio	65%	Bulk Roll Designation	<b>30mm (1.25")</b>
Backing Thickness (as supplied)	<b>X = High Shrink</b>	Configuration	<b>B = Bulk Roll Quantity</b>
Configuration	<b>L = 0.85mm (0.033")</b>		<b>ECS = End Cap Sealant</b>
	<b>P = CanusaTube™</b>		

Consult your Canusa representative for specific projects or unique applications.



A SHAWCOR COMPANY

[www.canusacps.com](http://www.canusacps.com)

<p><b>Canada</b> CANUSA-CPS a division of SHAWCOR LTD. 25 Bethridge Road Rexdale, Ontario M9W 1M7, Canada Tel: +1 (416) 743-7111 Fax: +1 (416) 743-5927</p>	<p><b>U.S.A./Latin America</b> CANUSA-CPS a division of SHAWCOR INC. 2408 Timberloch Place Building C-8 The Woodlands, Texas 77380, U.S.A. Tel: +1 (281) 367-8866 Fax: +1 (281) 367-4304</p>	<p><b>Europe/Middle East</b> CANUSA-CPS a division of Canusa Systems Ltd. Unit 3, Sterling Park Gatwick Road Crawley, West Sussex England RH10 9QT Tel: +44 (1293) 541254 Fax: +44 (1293) 541777</p>	<p><b>Asia/Pacific</b> CANUSA-CPS a division of SHAWCOR LTD. #05-31, Blk 52, Frontier Ubi Avenue 3 Singapore 408867 Tel: +65-6749-8918 Fax: +65-6749-8919</p>
---	--	--	---